

MERIDA
tufted
Care and
Maintenance
Guide

MERIDA

MERIDA MERIDIAN, INC. | 643 SUMMER STREET | BOSTON, MA 02210

TEL 800.345.2200 FAX 617.464.5417

WWW.MERIDAMERIDIAN.COM

MERIDA tufted

Care and Maintenance Guide

CONTENTS

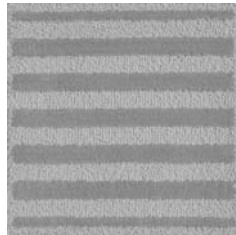
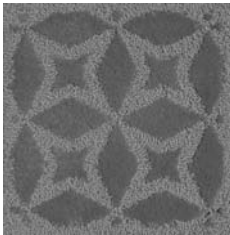
WOOL – QUALITY, FUNCTION, DISTINCTION	2
CARING FOR YOUR MERIDA TUFTED RUG	3
MAINTAINING YOUR MERIDA TUFTED RUG	5
Routine Maintenance	5
Removing Spills and Spots	6
Spot Removal – Types of Treatment	9
Warnings	10
Cleaning Agents for Spot Removal	10
Spot Removal Chart	12

Thank you for choosing Merida Meridian as your source for distinctive floor covering designs. Your new Merida Tufted rug blends colors, textures and cut and loop piles to create a beautiful, sophisticated floor covering. The rugs in this collection utilize an extensive palette of colors of the finest quality New Zealand Wool. Designed and manufactured in our Fall River, Massachusetts facility, Merida's tufted rugs feature depth of color and unique, customized designs that reflect Merida's trendsetting style.

WOOL – QUALITY, FUNCTION, DISTINCTION

Wool is *the* classic floor covering material, and its unique properties ensure quality, function and design distinction.

- **Wool's natural crimp makes it springy and resilient, enabling your rug to resist crushing from the weight of furniture.**
- **Wool's thin outer coating makes it naturally water-resistant, slowing the absorption of liquid spills.**
- **Wool's unique fiber structure enables wool to trap air, making it a great insulator of heat and sound.**



CARING FOR YOUR MERIDA TUFTED RUG

Receiving Your New Area Rug

To protect your rug from damage in shipping, we roll it with the face of the rug on the inside. When you receive the rug, you should open it, unroll it, and re-roll it in the opposite direction with the face on the outside. Leave it rolled up in the room where it will stay, allowing the rug to acclimate to the humidity and temperature of its new environment. The structure of wool fibers allows the yarns to absorb humidity and to release it again when the air is dry. After 24 hours, you may unroll the rug and put it in place.

- **Rugs in the Tufted Collection are for dry indoor use only. Constant exposure to the elements will erode the beauty and integrity of any material made of natural fibers.**

- Exposure to direct sunlight is a factor to consider when placing a rug in a room. Fabrics and fibers, no matter what they are made of or how they are dyed, will change to some degree if exposed to direct sunlight all day. The dyed yarns in your Tufted rug are manufactured using the very highest quality dyes and state-of-the-art dyeing equipment. Nevertheless, any rug placed in a sunny location should be turned regularly.
- With wool rugs, you can expect some shedding of wool fibers. This is perfectly normal. Simply vacuum as you normally would and this fiber will be easily removed.
- Due to the deep pile of this collection, we do not recommend its use on stairs.
- The wool in your Tufted rug has been permanently mothproofed. The effectiveness of this treatment will not diminish over time or with repeated cleaning.
- The use of a non-skid rug pad is recommended.

MAINTAINING AND CLEANING YOUR MERIDA TUFTED RUG

The use of a coarse doormat or walk-off mat at your front door will provide a great deal of protection for your new floor covering. The goal is to remove as much of the outside dirt as possible from the shoes of those entering your home.

Routine Maintenance

- Vacuum regularly
- Remove spills immediately
- Professionally clean once every year or two

To maintain its original beauty and to prolong the life of your Tufted rug, vacuuming once or twice weekly is very important. This will regularly remove the fine dirt particles that can lodge between the fibers and cause additional wear. For best results, we recommend the use of a vacuum cleaner with powerful airflow and adjustable brushes. Due to the deep pile of this collection, we do not recommend the use of a beater-bar vacuum. A thorough cleaning by a professional is recommended every year or two.

Removing Spills and Spots

Spills on all natural fiber rugs need immediate attention. Wool is very slow to absorb liquids, but the sooner you address a spill, the more likely you are to get all of it out and prevent staining. A liquid spill left untreated will act as a magnet to any dirt particles that are in the rug, causing the dirt to rise to the surface. This dirt may cause a dark stain. To prevent this from happening, try to keep the rug as soil-free as possible with regular vacuuming.

When a spill occurs, it is important to remove it immediately by blotting the area with a clean, absorbent white cloth. Never rub the area of the spill. Rubbing can work the liquid deeper into the fibers, making the spill more likely to spread and stain the carpet. Blot thoroughly until no more liquid is transferred to your cloth. If the spill is clean water and the rug has been vacuumed recently, the area should dry without leaving a spot.

If the spilled liquid is anything other than water, you will need to apply a cleaning solution to the area. Please refer to the chart on pages 10–11 for the recommended treatment.

To remove spots caused by solid substances, first remove any remaining material. Scrape it up with a spoon or the dull side of a butter knife, always working from the outside of the spot toward the center. Then refer to the chart on pages 10–11 to determine the best cleaning agent to use on the spot.

You can also follow these general recommendations for cleaning:

- **First test the cleaning agent in an inconspicuous place.**
- **Blot the wet area with a white towel to see if the cleaning agent causes bleeding of dyes. If the white towel picks up color from the rug, dilute the solution.**
- **Apply the cleaning agent to your cloth or sponge, or mist it onto the rug with a spray bottle. Never pour it directly onto the rug.**

- **Begin with a small amount of cleaner and test its effectiveness. You can always apply more.**
- **Do not saturate the area.**
- **Always work from the outer edge of the spot toward the center to avoid spreading the spill.**
- **Do not rub or scrub the area. Gently squeeze the wool pile to get the cleaner to penetrate the fibers.**
- **After rinsing, dry the area, both pile and backing, as thoroughly as possible. Blot and squeeze the pile with a clean white cloth.**

We have found that these recommendations offer the best solutions to cleaning problems on all natural fiber rugs. However, it may be that some spots will never come completely clean due to the material spilled or the length of time the spilled material remains on the rug. In some cases, overzealous cleaning efforts may do more harm than good.

Spot Removal – Types of Treatment

Following are descriptions of treatments listed in the Spot Removal Chart on pages 12–13.

1. **Add cold water and blot**
2. **Detergent solution**
3. **Methylated mineral spirits or turpentine**
4. **Chill with aerosol freezing agent or ice cubes in a plastic bag. Pick or scrape off gum.**
5. **Warm water**
6. **Clean nail polish remover (preferably acetone)**
7. **Isopropyl alcohol**
8. **Rust remover**
9. **Absorbent powder (e.g., salt, talc, or Absorb-It™)**
10. **Absorbent cleaner (Host®, Capture®, or Dri-Matic®)**

Warnings

Some chemicals are hazardous (corrosive, flammable, toxic, etc.) and should be used with great care, strictly in accordance with their use and safety instructions. Do NOT apply any stain repellent treatment containing silicone because this tends to accelerate carpet soiling.

Spot Removal Chart (See page 9 for explanation of treatments.)

SPOT	ORDER OF TREATMENT		
	STEP 1	STEP 2	STEP 3
Alcoholic Beverages	1	2	–
Bleach	1	2	–
Blood	1	2	–
Butter	3	2	–
Candle wax**	–	–	–
Chewing Gum	4	3	–
Chocolate	2	3	–
Coffee	1	2	3
Colas and Soft Drinks	1	2	–
Cooking Oils	4	2	–
Cream	2	3	–
Egg	2	–	–
Floor Wax	3	2	–
Fruit Juice	1	2	–
Furniture Polish	3	2	–
Gravy and Sauces	5	2	3
Ink (Fountain Pen)	1	2	–
Ink (Ball Point)	4	7	2
Ink (Felt Tip)	5	2	6

** Absorbent paper and hot iron

SPOT	ORDER OF TREATMENT		
	STEP 1	STEP 2	STEP 3
Ketchup	5	2	–
Lipstick	3	2	–
Mercurochrome*	2	10	–
Milk	5	3	2
Mustard	2	–	–
Nail Polish	6	3	–
Oil and Grease	3	2	–
Paint (Latex)	1	2	3
Paint (Oil)	9	3	2
Rust	3	2	8
Salad Dressing	2	3	–
Shoe Polish	3	2	–
Soot	3	2	–
Tar	3	–	–
Tea	1	2	3
Urine (fresh)	1	2	–
Urine (old)	1	2	10
Vomit	2	–	–
Wine	9	1	2
Unknown Material	3	10	2

* Repeat Step 2

Chart courtesy of Wools of New Zealand.

Cleaning Agents for Spot Removal

Detergent Solution

Mix one teaspoon of clear dish washing liquid or detergent powder (containing no bleaches or strong alkalis) with a cup of warm (not hot) water. This solution must be rinsed with clear water.

Ammonia Solution

Mix one tablespoon clear ammonia (3% solution) with one half cup water. This solution must be neutralized with vinegar solution.

Vinegar Solution

Mix 1/3 cup white vinegar with 2/3 cup water.

Solvent

A dry cleaning solvent (available at grocery, drug and hardware stores) such as Carbona[®], Energine[®], or K2R[®] (chemically known as 1.1.1 Trichloroethane) preferred.

Absorbent Cleaners

Host[®], Capture[®], and Dri-Matic[®]

With proper care, your Merida Tufted floor covering will provide you with many years of service and beauty. If you have questions about your rug, or if you would like information about our other fine natural fiber products, please contact us:

Merida Meridian, Inc.

643 Summer Street

Boston, Massachusetts 02210

1-800-345-2200

info@meridameridian.com

Copyright 2007. Printed in USA.

tufted

For more information on cleaning and maintaining wool rugs,
visit www.fernmark.com.